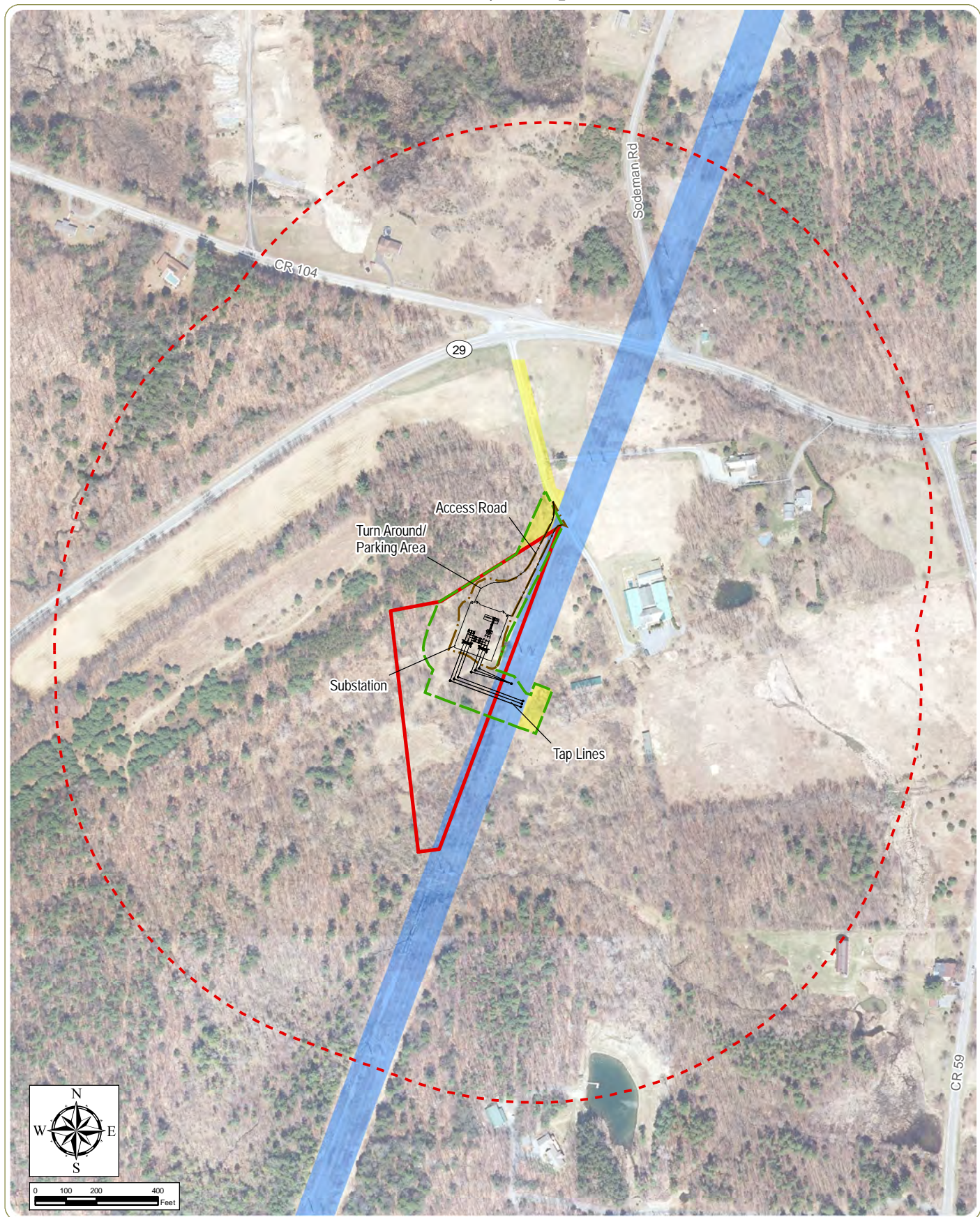


Project Map








Sodeman Road Substation Project

Town of Milton, Saratoga County

Figure 2-3: Aerial Photography

August 2015

Notes: 1. Basemap: NYS Office of Information Technology Services, GIS Program Office NYS Digital Ortho-imagery Program, 12 inch natural color imagery published in March of 2015 (Imagery collected in April of 2014). 2. This is a color graphic. Reproduction in grayscale may misrepresent the data.

-  Limit of Grading
-  Limit of Clearing (Project Site)
-  Proposed NG Fee Acquisition (Crootof Parcel)
-  Proposed NG Easement Acquisition
-  Existing ROW